



Garden Organic Sessions

Composting

Saturday 1 April 9.30am - 1pm at RCG

Pests & Diseases

Tuesday 4 April 7 - 9pm at The Kiosk

Worm Farming

Tuesday 11 April 7 - 9pm at The Kiosk

Food Soil Web

Saturday 15 April 9.30am - 1pm at The Kiosk

Introduction to Permaculture

Tuesday 18 April 7 - 9pm at The Kiosk

[Book online](#) from **\$44** per session



GARDEN ORGANIC
an introduction to organics
in the home garden

PICK FROM 8
SPECIALISED
SESSIONS

from **\$44**

Introduction to Botanical Art

Thursday 13 April 10am - 3pm

Workshop Part I Introduction to Botanical Drawing: Fruit & Berries


Friday 14 April 10am - 3pm

Workshop Part II

Introduction to Botanical Painting in Watercolour: Fruit & Berries

The Kiosk, Christchurch Botanic Gardens

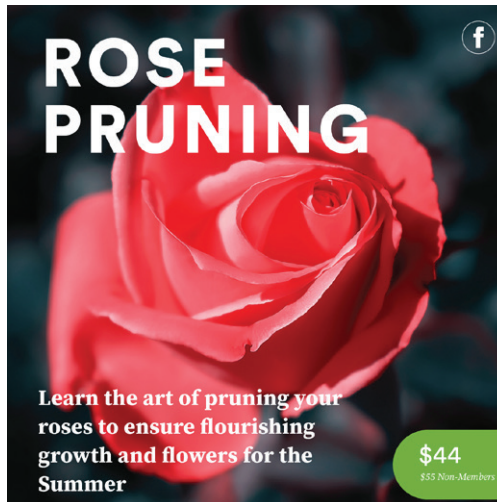
[Book online](#) **\$85** (\$105 Non-Members)



INTRODUCTION TO
BOTANICAL ART
Drawing & Painting

\$85
\$105 Non-Members

GUEST TUTOR
ARTIST TABATHA FORBES



ROSE PRUNING

Learn the art of pruning your roses to ensure flourishing growth and flowers for the Summer

\$44
\$55 Non-Members

Rose Pruning

Saturday 10 June 10am - 12pm

(Rain day Sunday 11 June)

Learn the art of pruning your roses to ensure flourishing growth and flowers for the Summer season.

Tutored by Michael Brown

Abberley Park Rose Garden, St Albans

[Book online](#) **\$44** (\$55 Non-Members)



**Winter 2023
Fruit Tree Workshops**

Learn how to Winter prune fruit trees for improved health and fruiting

\$65
\$78 Non-Members

Winter Fruit Tree Pruning

Saturdays - June, July & August

Join tutor Hamish Kelland at Richmond Community Gardens for these thorough theory and practical workshops.

Stonefruit Pruning

Saturday 17 June 9am - 12pm

Establishing Fruit Trees

Saturday 22 July 9am - 12pm

Pipfruit Pruning

Saturday 19 August 9am - 12pm

[Book online](#) **\$65** (\$78 Non-Members)

Garden Life

Wednesday 5 April 1pm and 7pm

Main Speaker: Sue Malloy

Magnetic Observatory Museum



Sue Molloy is a long-standing Botanical Resources Coordinator at the Christchurch Botanic Gardens. In this role she maintains the garden, herbarium, and library records, and has a special interest in botanical and horticultural history of Canterbury. Sue has worked in the Gardens three times over 35 years.

Sue will be sharing her passion for all the historical aspects of the Gardens, especially the research project that she instigated that opened last year – the Magnetic Observatory Museum.

Mini Speaker: Dave Adams

Highlights from the 2023 Edible and Sustainable Garden Awards

The Kiosk

Christchurch Botanic Gardens

\$5 (Non-Members: \$10)

Tea, coffee and biscuits included

Pay on the door

AGM

The 2022 Annual Report

This document is now available on our website for download.

www.chsgardens.co.nz/annual-reports



Friends of the
Christchurch Botanic Gardens

Free Mona Vale Guided Walks

Saturday 8 & 22 April 1.30pm

Meet at the Rose Garden adjacent to the car park by the Eros statue for a 90 minute walk.

Free Guided Walks

1.30pm from The Kiosk 45 - 60 mins

Sat 1 Biggest, smallest, quirkiest, tallest.....

Sun 2 Gondwana Collection

Mon 3 General Interest Walk – 90 mins

Tue 4 Leonard Cockayne Garden – a hidden gem

Wed 5 Notable Trees

Thu 6 Gondwana Collection

Fri 7 General Interest Walk – 90 mins

Sat 8 NZ Gardens – NZ Natives

Sun 9 Notable Trees

Mon 10 General Interest Walk – 90 mins

Tue 11 Notable Trees

Wed 12 Curator's House Potager Garden

Thu 13 Leonard Cockayne Garden – a hidden gem

Fri 14 Conservatories

Sat 15 Gondwana Collection

Sun 16 Plant Hunters – trees and their stories

Mon 17 Curious Conifers – a walk in the Pinetum

Tue 18 Autumn Colour

Wed 19 NZ Gardens – NZ Natives

Thu 20 Autumn Colour

Fri 21 Rock and Crevice Gardens

Sat 22 Plant Hunters – trees and their stories

Sun 23 Autumn Colour

Mon 24 General Interest Walk – 90 mins

Tue 25 Notable Trees

Wed 26 Curious Conifers – a walk in the Pinetum

Thu 27 NZ Gardens – NZ natives

Fri 28 Biggest, smallest, quirkiest, tallest...

Sat 29 Plant Hunters – trees and their stories

Sun 30 Notable Trees



Yao Zhang, Kowhai

Artwork Fundraiser

Mona Vale Bathhouse Restoration

Our recent Edwardian Garden Party raising funds for the restoration of the Bathhouse at Mona Vale was a huge success. Many artists offered works for sale on the day.

We are delighted to be able to continue the sale online with 30% of profits from the sales going towards the restoration project. See below for details on purchasing an artwork.

Direct donations to the Bathhouse Restoration Project can be made online by internet banking, or by cash or eftpos at the Kiosk. To view the available artworks please visit: www.friendschbotanicgardens.org.nz/an-edwardian-garden-party-artwork-sale

Bot Tots

Mondays 10 - 11.30am (term time only)

Gardening and nature themed activities for preschoolers. Drop-in during school term time (gold coin entry). [Facebook Event](#)

Watercolour Painting

Wednesday 12 & 26 April 10am

All welcome, BYO materials

The Kiosk, Christchurch Botanic Gardens

Fruit & Vegetable Group

Wednesday 26 April 7pm

Growing Great Garlic

with Cornelia Holten from Koru Kai

Free for CHS Members

\$5 for Non-Members



Garden Club Reps

Tuesday 4 April 12.30pm

The Kiosk, Christchurch Botanic Gardens

Green Thumbs Podcast

Monday 10 April 9am

Plains FM 96.9 Along with seasonal gardening advice Ray and Lorraine chat to interesting folk from the gardening world. If you miss a session you can find the recordings on the [CHS website](#).

Monthly Tips & Tasks

with Michael Coulter

We are moving well into Autumn as the trees change colour and there is morning dew on the ground. This reminds us that we need to get on with preparing the garden for Winter!

The grass is growing faster and will respond to fertilisers applied now that will keep the grass healthy. Look out for any signs of fungus, moss and grass grub then treat as required to give control.

Pip fruit can continue to be harvested, keep only the very best fruit for storage over the Winter.

Once the trees have been harvested a clean up spray to help stop any carry over of pests and diseases, especially on stone fruit is recommended.

As Summer crops finish remove all the old

plant material and compost if possible. Any material that is badly diseased should be disposed of in the rubbish bin.

Winter vegetables need to be kept growing so keep them free of weeds; if they are looking a bit slow then a side dressing of fertiliser may be required.

April is a good time to plant Spring bulbs into containers, and in the garden. Remember to use good quality potting mix and plant into well prepared ground. Only plant healthy firm bulbs that show no signs of damage.

Autumn flowering perennials will finish flowering towards the end of the month. They will need to be cut back by about a third before they die down completely. This includes Dahlias, Chrysanthemums and Asters.

Winter flowering annuals need to be planted as soon as possible so that they are well

established before Winter.

The greenhouse needs to have a good clean out and be treated for hard to control pests like white fly, thrips and mites to ensure they are not over wintered in the greenhouse to infect plants in the Spring.

It will soon be time to think about pruning, I suggest that you check over all the tools needed, clean and sharpen them so that they will be ready to perform good clean cuts that heal over quickly.

Before the weather becomes too wet and cold clean out the house spouting, treat the paths for moss and check any drains for blockages so that you well ready for Winter.

Good gardening, Michael Coulter

Remember: questions can be posted on [HortTalk](#) or you can email Michael directly at: coulchrys@xtra.co.nz



Christchurch EnviroKids Events at The Kiosk in April

Easter Upcycle Crafts with Envirokids
Saturday 8 April 10am

Come get crafty and make some guilt-free gifts and decorations for Easter! All of our crafts will be made of upcycled materials, and this workshop will be a great way for you to spend the afternoon with friends. This is intended for ages 5-13, but can be fun for the whole family.

Earth Day with Envirokids
Saturday 22 April 10am

Spend your Earth Day with Envirokids! We will be getting creative, and learning about how we can all make a difference. "The Earth is what we all have in common"

Check out Envirokids on Facebook [@CHCHEnvirokids](#) for events at The Kiosk and out and about in Christchurch.

Floral Design

Wednesday 19 April 2pm
The Kiosk, Christchurch Botanic Gardens

Currently the group is studying the upright styles of Ikebana under the tutoring of Ray King. Line: Basic upright style in a tall container no more than 10cm in diameter either round or square using cross bars or self-fixing methods. **Material:** You will need 2 firm branches 1cm thick

Welcome from the Manager

Hello CHS community, some of you will already know that the time has come for Sharnaé to trade her boots for slippers while she enjoys her maternity leave. I have been employed to try on those boots for 13 months.

After several training days with Sharnaé, I can appreciate how dedicated and diligently she has worked to keep the Kiosk running smoothly. Personally I would like to thank Sharnaé for her patience and understanding while we have worked together. I can't wait to meet her baby boy, whom I am sure will be a Bot-Tot in no time.

As a toddler my mother described me as an outdoor child who loved to help in the garden, planting and harvesting vegetables, perhaps I was a Bot-Tot.



While the Museum undergoes its exciting redevelopment the Friends will meet in The Kiosk on the third Tuesday of the month for coffee at 10am, and a guest speaker from 10.15am.

Fatherhood in Colonial Otago and Canterbury
Pauline Martens - Curator Human History
Tuesday 18 April 10am

The stereotype of the lone pioneer man still exists in New Zealand society today. This talk will go beyond this stereotype to tell stories about connected and involved family men in colonial Otago and Canterbury, using a range of historical sources. It will consider broadly the role of colonial fathers and what these stories can tell us about gendered roles within the family.

All welcome
Free (but bring some coins for the raffle)

and approx. 1m long, leaves such as hosta or ivy and 3 to 5 flowers with firm stems such as gerberas, carnations or dahlias (as long as the stem is sturdy and will hold the flower head up). **Theme:** Autumn flowers and seed heads.

Interested?
Contact: **Ray King** tel: 021 037 0675

See the latest photos on the Flickr album [online](#)

The gardening thread has woven its way throughout my life. I studied Horticulture at Lincoln University in the 1980s and Landscape design at Christchurch Polytechnic. There is no better way to spend a day than mucking around in the garden until the light fades and the sun sets.

My hillside garden in Cass Bay is my paradise with a tropical vibe, featuring palms, citrus, Yuccas and bold flower colours. Always at my side is my Boarder x Cairn Terrier, Bobby who is always willing to help with digging when I start wheelbarrow gardening.

Visiting gardens fills my heart with joy. For the next 13 months my heart will be filled with joy every day as I arrive at the CHS office in the Christchurch Botanic Gardens.

I am looking forward to being part of the CHS community, meeting many

Chrysanthemum COMPETITION
Local Growers - Wonderful Blooms
Saturday 29 & Sunday 30 April 10am - 4pm

Free Entry
The Kiosk
Christchurch
Botanic Gardens

Local Chrysanthemum Show

Saturday 29 & Sunday 30 April 10am - 4pm

Get up close and personal with these glorious blooms at The Kiosk in the Botanic Gardens. Meet the growers and be inspired to grow your own Chrysanthemum's at home!

Chrysanthemum Group

Monday 17 April 7pm
at Charlotte Robbs, St Albans

General Cultural notes, preparing for the local show at The Kiosk. New Members or guests please contact **Robyn** on tel: 942 9871

of you and ensuring the Kiosk runs smoothly during my time as Manager.



Warmest wishes
Sonja Tschepp

GARDEN LIFE

Monthly gardening programme
for the everyday gardener

We want your Problems!

We love to hear from our gardeners, especially any niggling problems, be they edible or ornamental! Bring questions to Garden Life, post them on [HortTalk](#) or email Michael Coulter coulchrys@xtra.co.nz

Garden Life

Wednesday 3 May 1pm and 7pm

Main Speaker: Mark Hutchings
Allwood Trees

Autumn has started to spread through Canterbury with the onset of spectacular displays of colour. As an excellent time of year to establish new trees, Mark will guide you through selecting the perfect tree for year round colour, texture and management.

Be inspired as he shares ideal choices for any size of garden, especially with smaller specimens being his particular forte. Mark aims for everyone to have the best garden possible.

About Mark

An accountant in a former life, Mark and

his wife bought the Allwood Trees nursery 25 years ago. Specialising in growing trees with approximately 15,000 trees in stock at any one time (including deciduous, NZ native and exotic evergreens), Mark is a passionate plants man and tree enthusiast. He prides himself on growing quality trees rather than quantity.

Mini Speaker: TBC

The Kiosk

Christchurch Botanic Gardens
Armagh Street car park footbridge
\$5 (\$10 Non-Members)
Tea, coffee & biscuits included

See our [website](#) and [Facebook](#) for updates.

Working Bees April



Wednesday 12 April 1.30 - 3.30pm

Saturday 29 April 10am - 12pm

Avebury House, Richmond

Big thanks to the Members that joined us for last month's Working Bee. If you'd like to help in April please contact Rachel Oliver. We made great progress last month but there is still plenty to do in our new patch!
rachel@chsgardens.co.nz
(Shared morning tea). [Facebook Event Link](#)

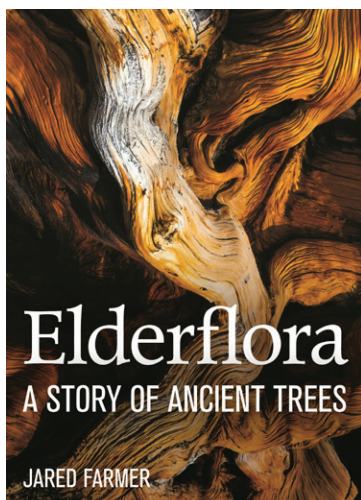
Scorpio Books

Elderflora – A Modern History of Ancient Trees

Jared Farmer

ISBN: [978103500905](#) | \$39.99

In this compelling book, historian Jared Farmer weaves a captivating story of humans' relationship with trees – particularly very old ones, known as elderflora. Farmer combines history, politics and science, travelling back in time and through many cultures and places to explore the ways in which our fascination and reverence for very old trees has morphed into exploitation and destruction. He takes us to England, Lebanon, Australia, and yes, to the kauri of



Aotearoa, studying the tales of the world's oldest trees through the stories and voices of religious figures, mythology, indigenous knowledge, and modern science.

Elderflora is a moving and timely account of our deep ties to nature, and of the ways in which humankind's desire to know, categorise and control it has caused some of our oldest treasures to reach untimely ends. If there is any argument for the importance of protecting our climate and giving care to young things so that they can grow old, this book is surely it. If you've read and loved 'Finding the Mother Tree' by Suzanne Simard, or find near magical fascination in the quiet of a forest, this book will astound and challenge you.

Many thanks to Scorpio Books for this review.
www.scorpiobooks.co.nz

Scholarship Call

Applications are now invited for the **Jeannie Dunlop Scholarship** and the **P C Browne Scholarship**.

Jeannie Dunlop Scholarship

Objective - to assist persons interested in horticulture to further their knowledge and/or experience in some form of amenity horticulture for the potential benefit of the recipient and possible benefit to the Society.

P C Browne Scholarship

Objective - to encourage and assist horticultural students and others similarly engaged to extend their knowledge on a special horticultural topic of their choice, by means of additional work experience, study and/or research.

For further details and eligibility visit the CHS website: www.chsgardens.co.nz

If you would like your application to be considered please apply by emailing the office directly on office@chsgardens.co.nz