



Lily Sale

We're delighted the Kiosk is playing host to the NZ Lily Society's annual fund-raiser. Varieties include Robina (red), Signum (white) and Lesotho (yellow/pale green) \$10 each (perfect for Christmas presents).

**Monday 30 November to
Tuesday 8 December (AAG).**



*Merry
Christmas*



Events coming up at *The Kiosk & Beyond*

BotTots

Weekly on Mondays 10 - 11.30am

Last session for the year Monday 14 Dec
Gardening & Nature themed activities for Preschoolers. Drop-in. Koha entry

business.facebook.com/events/60562069346896

Hanging Baskets Demonstration

Saturday 5 December 10am - 11.30am

An inspiring demonstration to ignite your hanging basket creativity!
\$15 Members \$20 Non-Members

Watercolour Painting

Wednesday 9 & 23

December 10am-12pm

Elizabeth Yuill-Proctor will be giving a special lesson on Wednesday 9 December. All welcome, The Kiosk, BYO materials.

Green Thumbs Radio

Monday 15 December 9am

Catch up with CHS President Ray King and Lorraine Campbell on Plains FM96.9. Interesting interviews and great gardening advice. December guests include Kerry Swanson and Neville Petrie, the brains behind the amazing 3D Bugs & Plants exhibition which runs during the school holidays 2-25 January.

Fine Art Photography

Sat 26 - Thu 31 December 10am - 4pm

Exhibition by Dawn Kirk, a local photographer who uses a lightbox to

enhance the simplistic beauty of the flowers in her garden. Also featuring in this exhibition are native birds and landscapes. All works are for sale. Free Entry

Q & A at The Kiosk

Winter Hours Extended 7 days 10am-3pm

One-on-one gardening advice with volunteers from the CHS and Friends of the Botanic Gardens.

3D Bugs & Plants

Saturday 2 - 25 January 2021 10am - 4pm
at The Kiosk

Immersive exhibition of 3D images as well as historic microscopes to explore. **\$6 per person, \$20 family, under 5s free (includes catalogue and 3D glasses).**

Art in the Park Exhibition

Thursday 28 - Sunday 31 January 2021
10am - 4pm The Kiosk

Four local artists, Therese Boustead, Sandie Brown, Dawn Kirk and Christine Doyle, have joined forces to present a variety of art, including watercolour, oil and photography. These local artists would welcome your support. **Free entry**

February Happenings

There is plenty of action in The Kiosk in 2021! Watch out for the Alinos Ceramics exhibition paintings by well known Rhonda Campbell and printmaker Margaret White, who creates limited edition hand-pulled prints.

All About Gardening DECEMBER 2020

Monday 7th 7pm & Tuesday 8th 9.45am

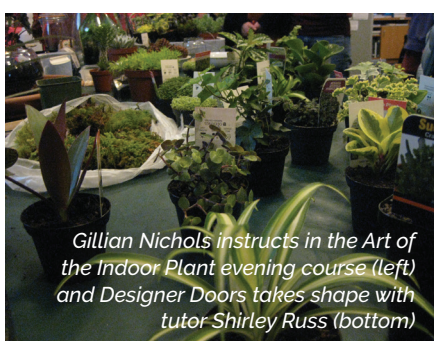
Paul O'Donnell and Gordan Nairn



Paul and Gordan from the Christchurch Hobbyist Beekeepers Club will be presenting 'Bee Kind' - teaching us how to keep bees happy in our gardens. There will be live bees in the building and they will touch on the art of beekeeping.

The Kiosk, Christchurch Botanic Gardens (just over the footbridge from Armagh St car park).

*\$5 members \$10 non-members.
Includes tea, coffee & biscuits.*

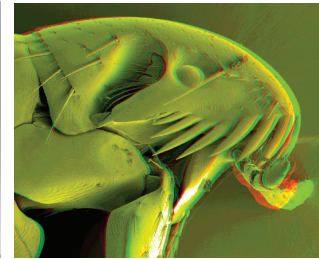


Gillian Nichols instructs in the Art of the Indoor Plant evening course (left) and Designer Doors takes shape with tutor Shirley Russ (bottom)



3D Bugs & Plants

Saturday 2 - 25 January 2021 10am - 4pm at The Kiosk



Plants Up Close and Intimate and The Importance of Small

A 3D Microscopic Photograph Exploration

This exhibition brings together stunning 3D images of plants, insects and spiders taken with the Scanning Electron Microscopes at the University of Canterbury. Selected from 1000's of photographs, these incredible images will transport you into a microscopic world.

Use your 3D glasses and catalogue to discover more about bugs and view dramatic 3D images of plants on the large screen TV. Additional monitors will show highly magnified everyday items as you have never seen them before!

View the amazing historic microscopes in the Cotter Medical History Museum displays and use the microscopes in the Discovery Zone to immerse yourself even further into microscopic worlds.

\$6 per person, \$20 family, under 5s free.

Photo sets available for purchase | give-aways & competitions

Chrysanthemums

Saturday 12 December, Christmas function

Sunday 24 January 12.30pm

Mona Vale, meet near the Lily Pond opp Rose Garden. Bring a picnic lunch and chair/rug (partners & family welcome).

Monday 15 February 6pm

David and Robyn's 11 Ruakaka St Potluck tea General cultural notes, pest control and bud securing of lates.

Garden Club Reps

Tuesday 8 December 12.30pm

The Kiosk, Christchurch Botanic Gardens

Junior Gardeners

Thursday 17 December 3.45pm

Making a Christmas Table decoration.

Next meeting **Thursday 18 February 2021.**

New children welcome, please contact the CHS office if attending. Tel: 366 6937

Floral Design

Wednesday 16 December 2pm

The Kiosk, Christchurch Botanic Gardens
This month: **Arrangement:** Red & gold or silver. **Materials:** branch material something scented and glossy. Flowers bold and bright. **Container:** Asymmetrical shape in glass or pottery. **Mechanics:** free standing or use a Kensan. **Accessories:** Anything gold or silver. **Theme:** It's Christmas!

Monthly Tips & Tasks with Michael Coulter

The longer days of Summer are here along with the warmer days and nights which means plants will grow rapidly. There are many tasks in the garden that will need to be attended to on a regular schedule.

We have had some useful rain in the last month but not enough to sustain good plant growth so watering is needed. Watering is best directed to the areas of the root zone of the plants and given a good soaking so that they may need to be watered about once every 10 to 14 days dependant on how hot and windy the weather has been.

Lawns will also need to be watered regularly to prevent them drying out. They will also benefit from being cut at a higher level.

Watering is best done in the early morning avoiding the very hottest part of the day or in the early evening, but allowing time for the plants to have dry leaves before the night time so that fungal diseases are not encouraged.

Summer fruits are beginning to ripen (I have picked our first strawberries) so watch out for the birds and cover with netting before the berries show colour.

The vegetable garden is now producing from Spring plantings and crops like beans, sweet corn, pumpkins, tomatoes and potatoes will all be growing fast. Keep weeding around all these plants to reduce competition to get the better quality produce from your efforts. I suggest that a quick hoe around the garden once a week takes little time and gets the weeds as small seedlings that die quickly. You are also looking at the plants so will notice any problems that can be easily fixed.

There are some pests that need to be treated now so that they are not a problem later on in the season; potato psyllid, grass grub, codling moth and thrips. The more noticeable pests like aphids and caterpillars can be treated when you see them on the



From the President

Goodness hasn't the year flown by with all the ups and downs we have had. Here we are on our last newsletter for the year and I imagine you are all thinking of Christmas and time with friends and family. For many of you it will still be an anxious time with so many of our young people still caught up overseas.

This is also an anxious time in the garden for those who go away over the holiday period, what to do with the garden so it is still producing once we are back to normal again. I imagine that Michael will have some tips for us to get us through this time.

If you are travelling away somewhere within New Zealand travel safely and enjoy your time away. If, like me, you are staying around Christchurch then enjoy being with family and friends and spend some relaxing time enjoying your garden.

No matter what your plans are the board and staff of the CHS wish you all a very Merry Christmas and a happy and prosperous New Year. We all look forward to seeing you again in 2021.

Best wishes, **Ray King**
President, Canterbury Horticultural Society

*Christchurch Mayor Lianne Dalziel
opens the Rose Society's 75th
Anniversary Display in the Kiosk*



Lincoln Gardens with Christmas Afternoon Tea at "Dalkeith"

Wednesday 9th December 2020



CHS Garden Clubs, Floral Design & CHS Members

You are invited to join us for three garden visits, followed by afternoon tea.

1.00pm Hosts Anne & Mike Timblich, 7 Liffey Fields Drive, Lincoln.

1.40pm Host Ruth Mitchell, 47 Liffey Fields Drive, Lincoln

2.15pm Hosts Clare & Alex Scott, 18 Liffey Fields Drive, Lincoln

2.45pm Hosts Ted & Steph Wills, 147 Boundary Road, Lincoln

(Please park on roadside and walk down driveway.)

\$20 per person (includes afternoon tea)

RSVP to Gail Scrivener

tel: 0274 892906 or 3296966

gail.scrivener@xtra.co.nz

Please note that this is a CHS Garden Club Reps initiative



Ramblers

Tuesday 15 December 9.45am
Christmas Get together

Morning tea and a walk from the home of Alison Fussell.

Bring morning tea (last meeting for the year). To go ahead rain or shine

2021 Programme out now:
www.chsgardens.co.nz/ramblers

Friends of the Christchurch Botanic Gardens

Free Guided Walks

The Guides are once again running free walks from the Kiosk at 1.30pm daily. Check the blackboard outside the Kiosk for the weekly schedule.

Envirohub

EnviroHub Regular get togethers:

[Environmental Chat with Kat](#)

Thursday mornings and lunch at The Kiosk

[Networking - Drinks with a purpose](#)

Once a month at the Exchange

[Enviorkids](#) - Activities inspired by what is happening in the Envirohub networks at the Kiosk **Saturdays 10am-3pm**



plants throughout the growing season.

In the green house crops, white fly and mites can be a real problem so treat the plants now to prevent the populations getting to a crisis point when they are almost impossible to control.

In the flower garden planting Summer annuals can now be completed with the planting out of the likes of begonias, dahlias, marigolds etc. and earlier planted plants can be pinched to encourage a more bushy plant.

Roses will be now in full bloom, dead head as the flowers fade and treat for black spot and aphids.

Summer is a very busy time in the garden so take time to smell the roses, enjoy the fruit so that you can appreciate why we garden.

Happy Christmas, Michael Coulter

Woodend Garden Club 75th Anniversary

The Woodend Garden Club proudly celebrated 75 years of gardening and fellowship in November.

Members and guests enjoyed a wonderful lunch held at Rosebank Winery. Mayor Dan Gordon and Christchurch Horticultural Society President Rae King were inspiring speakers. Chris Sutherland was the MC for the day. The afternoon concluded with the past and current Presidents (Shirley Wheeler and Brenda Batchelor) cutting the cake.



ALL ABOUT GARDENING

Monthly gardening programme
for the everyday gardener

 **The Kiosk**
Canterbury Horticultural Society

All About Gardening

There is no All About Gardening Meeting in January

FEBRUARY

Monday 1st 7pm & Tuesday 2nd 9.45am

Forager **Peter Langlands** aims to promote wild foods and foraging in New Zealand. He works with chefs all over the country, advising on how to forage for everything from seaweed to edible flowers.

The Kiosk, Christchurch Botanic Gardens (over footbridge - Armagh St car park). *Members: \$5 Non-members: \$10 (includes tea, coffee and biscuits)*

Christmas Hours

The CHS office will close for Christmas on **23 December** and reopen on **18 January 2021**.

We wish you all a happy and safe festive season and look forward to seeing many of you at our February All About Gardening meetings.

Don't forget to visit The Kiosk over Summer to enjoy the interesting events and exhibitions.

DEMONSTRATION



English Style Hanging Baskets

Saturday 5 December 10am-11.30am

With Summer entertaining just around the corner surely it's time to freshen up the outdoors with some flamboyant pops of colour!

This informative demonstration by Maggie Croy will give you all the know-how you need to have bright bedding plants flowering into late Summer. There is also a chance to win one of ten \$10 Portstone vouchers to put towards creating your own colourful hanging basket.

\$15 Members, \$20 Non-Members

Book via the office - tel 366 6937 or online at

www.chsgardens.co.nz

2021 MEMBERSHIP
available now

Sign-up
Online

chsgardens.co.nz

15% off

courses and
workshops for
Members

BECOME A MEMBER

Gardening & horticulture questions answered [facebook.com/groups/CHSHortTalk](https://www.facebook.com/groups/CHSHortTalk)