



Canterbury Horticultural Society Newsletter No 250 **SEPTEMBER 2018**



Oderings Members Evening

Thursday 11 October 4.30-6pm

205 Cashmere Road



Open just for CHS Members - 1½ hours!

Stock up on the essentials or treat yourself to some new tools. And don't forget the plants - Indoor, outdoor, roses, shrubs, bedding, even trees. And there is so much more - from shoes to candles, or early Christmas gifts? **Discount available on presentation of CHS Membership Card**

Once again Oderings Garden Centre are generously hosting a special "one off" evening for CHS members where everything except items already discounted will be **reduced by 20%**.

Excludes purchase of gift cards, gift vouchers, credit vouchers, glass houses and all creative woodcraft and bee related products. No further discount off already discounted items. No Oderings Club Cards can be swiped at time of purchase.

**Wonderland
Cafe at Oderings
Cashmere is open
until 5pm.**

*Why not gather some
friends for afternoon
tea before your
shopping.*

WHAT'S ON THIS MONTH SEPTEMBER EVENTS

ALL ABOUT GARDENING

Mon 3 Sep 7pm & Tue 2 Sep 9.45am

Colin Meurk: Let's turn the Canterbury Plains from Extinction Capital to Eco-Province – Starting Now!"

Also in the programme, Gardening Half Hour, Q & A.

*Christchurch Bridge Club, 21 Nova Place
\$2 Members \$5 non-members
Includes tea, coffee and biscuits*

SPRING FLOWER SHOW

**NZ Alpine Garden Society
CHS Daffodil Circle
Rhododendron Society**

**Saturday 15 September 1 - 5pm
and Sunday 16 September 10am - 4pm**

*The Woolston Club
43 Hargood Street*

*Admission \$5
Children under 15 free*

2018 DAFFODIL SHOW

**Saturday 29 September 1 - 5pm
and Sunday 30 September 10am - 4pm**

See the World's Newest & Finest Daffodils
Entries from all around New Zealand

Darfield Recreation Centre

*Admission \$5
Children under 15 free*

WALK WITH THE DAFFODILS

**Saturday 22 September 1-5pm
391 Pound Rd, Yaldhurst**

Leitha & David Adams invite
CHS Members to walk in
their daffodil patch.

Tea & coffee will be provided.
Come earlier and have a picnic
in the paddock if you wish. A
chance to enjoy the company of
fellow Members and a chance
to see varieties and forms of
daffodils not usually seen.

*Look for the daffodil flag at
the gate. Drive in and park
amongst the flowers.*

FROM THE PRESIDENT

Spring is in the air early this year. I noticed a number of my flowering trees opening early and several perennials coming through the ground early. Lets hope we don't have too many late frosts.

Recent activities include our varied All About Gardening meetings (averaging approximately 85 people), four Fruit Pruning Workshops at various schools and the final in our Winter Speaker Series - the M J Barnett Memorial Address. All great activities.

The M J Barnett address was given by Jason Butt and titled, "**Don't Panic! It's Only Nature**". Jason covered a range of topics regarding how natural re-vegetation techniques provide a sign post to how we might undertake re-vegetation projects in different ways, providing not only homes for native plants but for a wide range of native animal and insect species. Thank-you to all Members who attended this extremely well presented and entertaining address. Please keep watch for information about coming events in our newsletters, emails and Facebook page.

Just a note, 839 people like our Facebook page.

Alan Jolliffe, CHS President



YATES 2018 BUDDING YOUNG GARDENER

CALLING ALL YOUNG GREEN THUMBS

Growing a love of gardening and all things outdoors is behind the inaugural Yates Budding Young Gardener 2018 competition.

A national search is on for young gardeners, aged 5-15 years, who love getting into the garden. The lucky winner will become a Yates ambassador for one year and win an amazing family trip to Australia.

Seven regional winners will be selected by the judges and they will win a massive Yates Budding Young Gardener Hamper valued at over \$300. They will also go through to the final with the grand winner being chosen through a public voting system and will be off to Queensland with their family.

Keen gardeners aged 5-15 years can enter by going directly to www.yates.co.nz/budding-young-gardener and completing the entry form and uploading a short video about themselves and their garden.

Entries close 17 September 2018



Canterbury Herb Society News

On Thursday 25 October the Canterbury Herb Society celebrates its **50th Anniversary** with a lunch at the Raspberry Cafe in Tai Tapu.

If you wish to attend please contact **Janet Porton** by 27 September.

Tel: 348 6635

PO Box 80017, Riccarton

Email : jporton56@yahoo.co.nz

Next Meeting

Thursday 27 September 7pm

Topic: **Herbs of the Bible**

Herb of evening: Frankincense

Tasting: Please bring something using saffron.

Meetings held at:

Avice Hill Craft Centre

395 Memorial Ave

Visitors \$2, all welcome

CHRYSANTHEMUMS

Saturday 1 September 1.30pm

Susan & Michael Coulter's
183 Weston Road St Albans

Workshop to take cuttings for plant sale
General cultural notes, preparing soil for potting on early flowering plants. Pests and sprays.

Saturday 6 October 1.30pm

Susan & Michael Coulter's

Potting on and labelling plants for the plant sale. Plant sale arrangements
General cultural notes, plant nutrition and fertilisers. Followed by take away tea provided by the Circle.

GARDEN CLUB REPS

Tuesday 4 September 12pm

Christchurch Bridge Club, 21 Nova Place

JUNIOR GARDENERS

Thursday 20 September 3.45 - 5pm

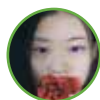
Terra Viva Home & Garden
242 Roydvale Ave, Burnside

Location of meeting venues subject to change. Please call the CHS office if in doubt. Tel 366 6937



NEWS FROM FACEBOOK

HortTalk Discussion



Meili Duan shared a picture of this interesting fruit

Claude McKavanagh said: That looks a very nice fruit Meili, what country does it come from ?



David Adams commented: Hi Meili, I know

nothing about this plant. Please tell me more. Is the fruit for eating or just ornamental? If it is edible is it available in NZ and would you eat it cooked or raw?



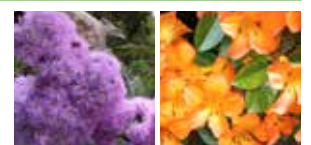
Its common name is Calcium Fruit in China It

contains various mineral elements beneficial to the human body, especially the content of calcium is higher than that of ordinary fruits. It comes from China. There are many different varieties. It is fruit. It can be made into wine and snacks.



Mary Brown was after help identifying these plants seen on a trip to Taranaki

Rachel Vogan posted: vireya Rhododendron (image right). Can anyone ID the other flower?



Join the discussion!

www.facebook.com/groups/CHSHortTalk



NATIONAL GARDENING WEEK is back!

15-22 OCTOBER 2018

Our Monarch Butterfly is under threat and this National Gardening Week Kiwis are being called upon to plant butterfly friendly plants to help save the caterpillars when they hatch in Spring and Summer, and provide nectar for butterflies.

Yates is getting behind the drive to avert a similar crisis this year by giving away various free butterfly friendly seeds including Yates new Butterfly Field Mix seeds between **1st and 14th October**.

Just register online during this time to receive your seeds.

www.yates.co.nz/nationalgardeningweek

THE GREAT LIBRARY SEED & PLANT SWAP 2018

Spring is on its way and to celebrate the season of growing and gardening Christchurch City Libraries are hosting seed and plant swaps in the first half of September.

Bring in your extra seeds and small plants and they will put them out to share.

Vegetable, herb, flower, native, and heritage seeds are all welcome.

You can also bring any spare potted-up seedlings.

Seeds can be dropped in anytime before or during seed swap season, **1 to 16 September**.



You can swap and donate at any of these Libraries in September

Linwood Library at Eastgate
Saturday 1 September until Sunday 16 September (All day)

Lyttelton Library
Saturday 1 September to Saturday 8 September (All day)

Shirley Library
Saturday 1 September to Friday 7 September (All day)

Spreydon Library
Saturday 1 September (10am to 1pm)

South Library
Saturday 1 September and Sunday 2 September (All day)

New Brighton Library
Saturday 1 September (10am to 3pm)

Te Hāpua: Halswell Centre
Sunday 2 September to Sunday 9 September (All day)

Matuku Takotako: Sumner Centre
Monday 3 September to Sunday 9 September (All day)

Papanui Library
Friday 7 September and Saturday 8 September (All day)

Akaroa Library
Monday 10 September (All day)

Fendalton Library
Monday 10 September (1-3pm)

Hornby Library
Monday 10 September (2-5pm)

Ōrauhata: Bishopdale Library and Community Centre
Thursday 13 September (All day)

Parklands Library
Saturday 15 September (10am to 1pm)

RAMBLERS

Tuesday 11 September 9.45am

Cashmere

Meet Fernhurst St & Ashgrove Tce crn

Tuesday 25 September 9.45am

Fendalton

Meet Waiwetu Reserve, Waiwetu St

No walk if wet. FREE

Programme available online:

www.chsgardens.co.nz/ramblers

FRUIT & VEGETABLE

Wednesday 26 September 7.30pm

Deaf Society of Canterbury
80 Fitzgerald Ave

Planning a New Garden by Alan Jolliffe, President CHS

A Visual Guide to Gardening through the Year 2 with Peter Saunders

FLORAL DESIGN

Wednesday 19 September 3pm

The group is working on basic Ikebana techniques for the next few months.

New members welcome.

Contact the CHS office

Tel: 366 6937

Email: office@chsgardens.co.nz

See the latest creations online:

<https://flic.kr/s/aHsm3HUR3N>

MONTHLY TIPS & TASKS with Michael Coulter

This month is when Spring really begins to get going! Plants come into leaf, grass starts growing and so do many of the pests that attack our garden. Winter clean up should be completed and gardens prepared for planting and seed sowing.

We've not had a lot of rain lately so the soil is in a good condition for digging to get a good tilth for seed sowing and planting.

Many of my fruit trees are in blossom two weeks earlier than usual so I'm hoping for a good fruit set. Late frosts are always a possibility so it will pay not to get too keen to with planting even though temperatures are rising.

Vegetable Garden

1. Do final copper sprays on fruit trees before trees are in bloom.
2. Dig over soil and incorporate compost and fertilisers ready

for planting and sowing.

3. Sow tomato, pepper, chilli seeds inside.
4. Peas, onions, silver beet and beetroot can be sown outside.
5. Brassicas and lettuce plants may be planted.
6. Strawberries and other soft fruits may be planted but do keep them well weeded.
7. Pip and stone trees may be planted and existing trees fertilised.
8. Weed asparagus, garlic and broad beans.

Flower Garden

1. Complete rose pruning and prune Winter/Spring flowering shrubs as soon as they finish flowering.
2. Remove spent flowers on Spring

bulbs and fertilise with potash to encourage next season's flowers.

3. Cut back perennials old flower stems and leaves and treat for slugs and snails.
4. Prepare soil for planting Summer annuals
5. Look for aphids on Spring flowering plants and remove old flowers to encourage more flowers.

Lawns

1. Catch grass when mowing at this time.
2. Apply first fertilisers and incorporate moss treatment if needed (sulphate of iron)
3. Repair any worn areas with topdressing or instant turf.
4. De-thatch by raking or using a machine.
5. Treat for weeds



Gail Scrivener is an experienced Tour Guide with over 30 years in the industry. Gail has led tours for the CHS to Thailand, Tasmania, Melbourne and Norfolk Island, as well as many in and around NZ.

TOURS WITH THE CHS

Welcome in Spring

Wednesday 5 September 10am

Visit to K & L Nurseries and Memory's Café Springston. Carpool from Tai Tapu. **\$25** includes morning tea and light lunch.

Christchurch Spring Garden visits

Wednesday 31 October 1.30pm

The gardens of Sue & Alastair Stokes and Pat Pilkington, Merivale area **\$10** includes afternoon tea (self drive)

Tour registrations via the CHS office

Tel: 366 6937 office@chsgardens.co.nz

Hurunui Garden Festival Tour

Friday 2 & Saturday 3 November

8 gardens to visit over two full days! **\$450** \$95 (single).

Spring Day Tour, Darfield & Hororata

Wednesday 7 November

\$145 includes coach, morning tea and buffet lunch.



Spring Day Tour in Darfield & Hororata Wednesday 7 November 2018

Our full day tour in the Darfield and Hororata regions features three garden visits as well as a buffet lunch at **Homebush** and a talk on the history of the property.

Taradale Annette & Michael Millar

This semi-formal garden on a lifestyle property at Charing Cross was started approximately 18 years ago.

Larger trees and pittosporums form a sheltered background for natives, roses, rhododendrons and perennials. Winter roses and Spring bulbs are a feature as well as large lawns and manicured boxwood and laurel hedging surrounding the garden.

Morning tea will be served country style.

The Gums Helen & Graeme Loe

This country garden was developed 14 years ago. The gardens consist of a mixture of mature shrubs, rhododendrons, azaleas, camellias and hydrangeas, peonies, lavenders, trilliums, roses, wisteria, perennials and clematis varieties.

Terrace Station Kate & Richard Foster

This garden dates back to the 1850s and has strong formal design features from the Victorian era. It has adapted with a relaxed informality that suits the present hosts Richard and Kate.

Do not expect extreme neatness, but be prepared for surprises

when you spend time in this extensive woodland garden. It is a very restful and uncontrived place with mass planting of bulbs, perennials and herbaceous plants.

Notable features are the magnificent trees, vistas from one garden room to another and the effects of light and shade on the tree trunks.



WHAT'S COMING UP NEXT MONTH OCTOBER EVENTS

ALL ABOUT GARDENING

Mon 1 Oct 7pm & Tue 2 Oct 9.45am

Michael Trengrove from **The Electric Garden** / Digital Future Aotearoa on a primary school project which supports digital learning through gardening.

Also in the programme, Gardening Half Hour. **Christchurch Bridge Club** 21 Nova Place

\$2 includes tea, coffee & biscuits

ODERINGS EVENING

Thursday 11 October 4.30pm - 6pm

Oderings Cashmere, 205 Cashmere Rd

Stock up on the essentials or treat yourself to some new tools at the Oderings Shopping Night!

20% discount when you present your CHS Membership card.

Contact the office for replacement cards. office@chsgardens.co.nz or tel: 366 6937

NATIONAL GARDENING WEEK

15 - 22 October 2018

Brought to you by Yates

To get involved visit:

www.yates.co.nz/nationalgardening

